

THE URBAN UNIT

ESMF

PUNJAB CITIES GOVERNANCE IMPROVEMENT PROJECT ENVIRONMENTAL AND SOCIAL MANAGEMENT FRAMEWORK

PCGIP is World Bank funded project aimed to support the five cities of Punjab (Lahore, Faisalabad, Multan, Gujranwala and Rawalpindi) in strengthening the governance system. It also supports the province in improving the capacity to respond effectively towards an eligible crisis. Under PCGIP, Environmental and Social Management Framework (ESMF) is prepared by the Government of Punjab to mitigate the anticipated social and environmental issues that may emerge during execution of development schemes undertaken by the CDGs/WASAs of five cities.

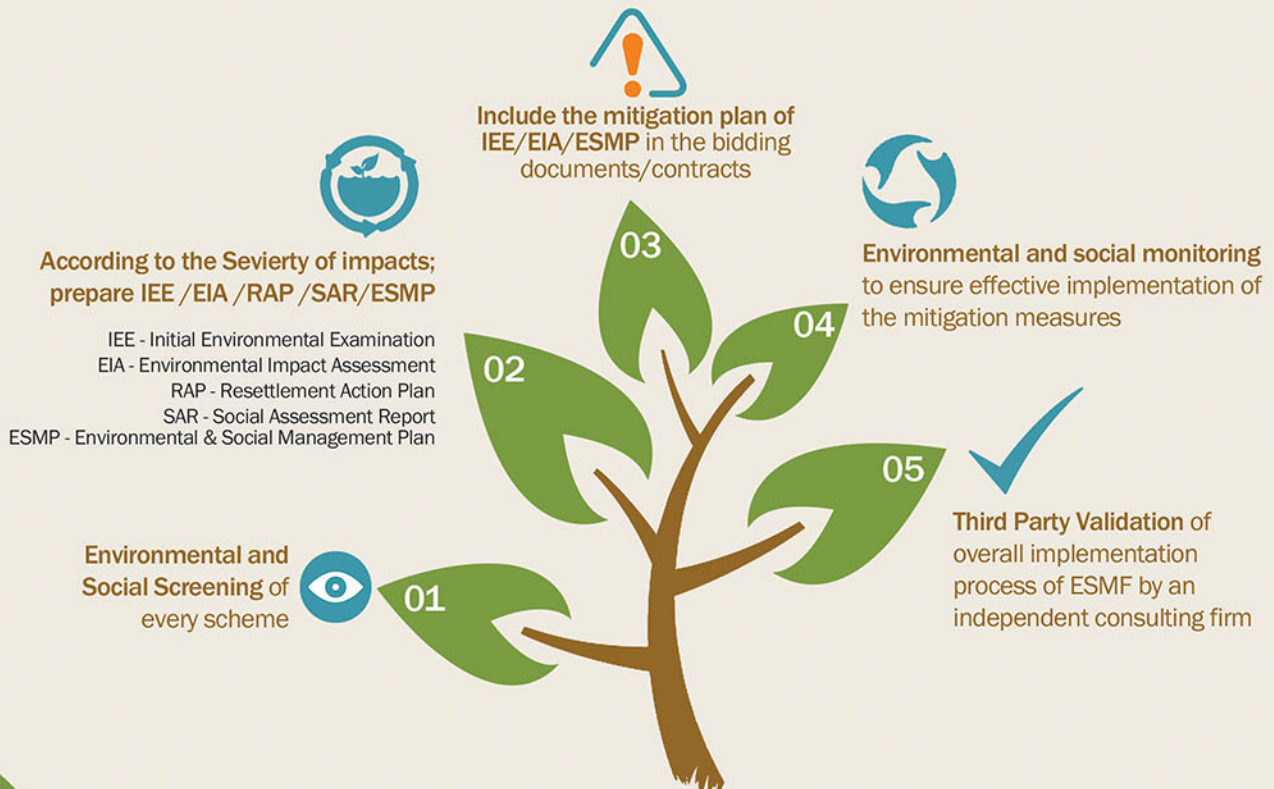
Baseline

To strengthen the present regulatory framework on management of environmental and social issues and include the environmental management in routine practices of service delivery of cities.

Major objective of ESMF is to:

Ensure that the schemes implemented and design by the CDGs/WASAs of five cities are environmentally sound, socially acceptable and they comply with the national regulations and WB policy guidelines

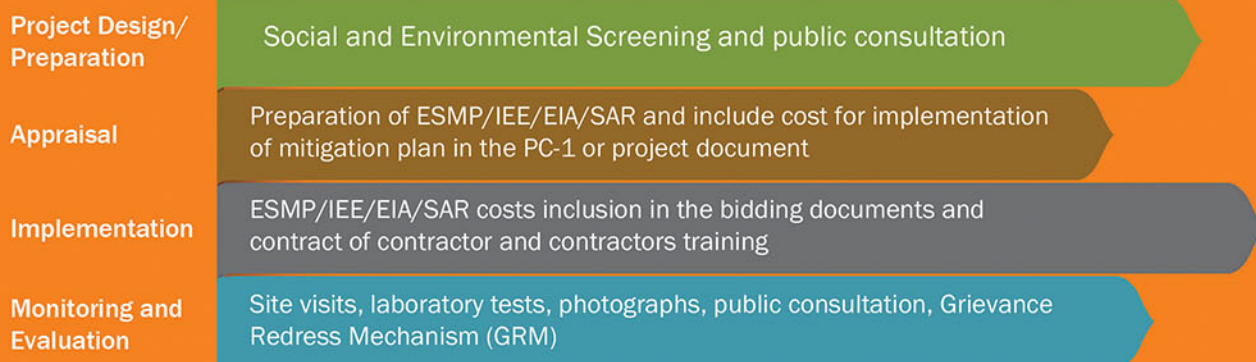
ESMF Implementation Steps



THE URBAN UNIT
Urban Sector Planning & Management Services Unit (P-1) Ltd.
A Public Sector Company.

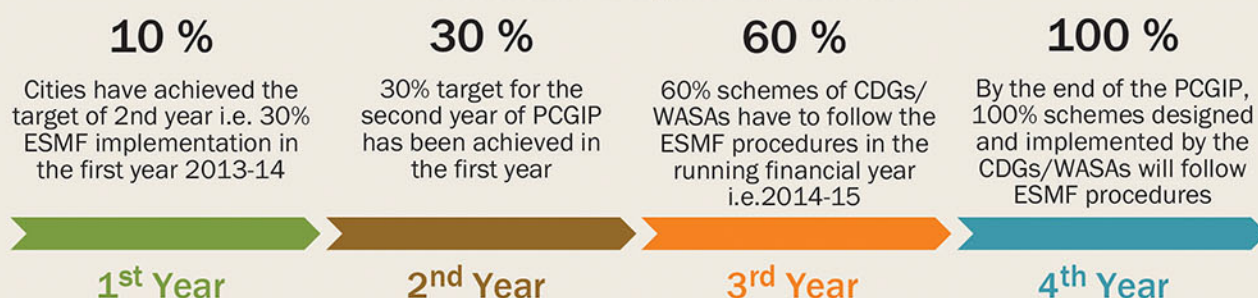


Project Cycle

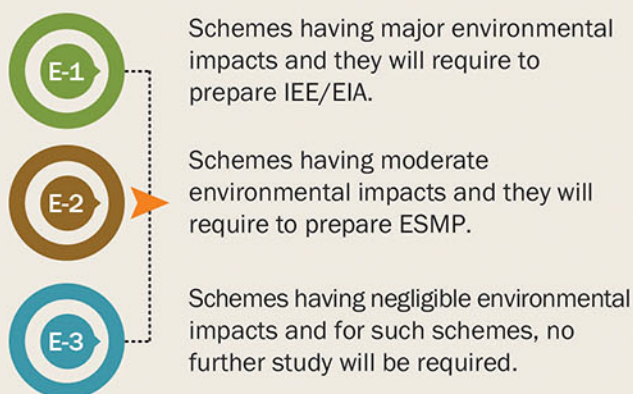


Implementation Schedule

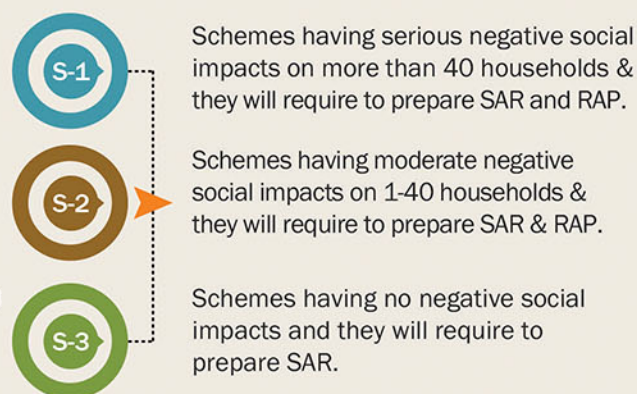
Government-financed schemes have to follow the environmental and social management procedures.



Environmental Screening



Social Screening



Progress Updates on ESMF for the Year 2013-14

City	Total EEPs Schemes		E2 Schemes		TPV of E2 Schemes		TPV of E3 Schemes	
	CDG	WASA	CDG	WASA	CDG	WASA	CDG	WASA
Gujranwala	17	19	02	06	02	06	02	06
Rawalpindi	24	10	14	04	06	03	06	03
Faisalabad	16	06	14	03	04	02	04	02
Lahore	125	16	22	0	under process		under process	
Multan	17	14	01	03	under process		under process	

